



08/06/2026

**TAVOLI DA TAGLIO PER VETRO MONOLITICO / CUTTING TABLES FOR MONOLITIC GLASS**  
**GRANDI LASTRE / JUMBO GLASS**

**LISEC GFB 60/30 –Year 2007**

Tavolo da taglio vetro monolitico – visto e piaciuto  
Cutting Table for Monolithic Glass – as is

MaxDimensions 6000x3300

Thickness 3-19 mm

Speed 120 m/min.

Precision +- 0, 2 mm

Power 13 kW

Automatic Cut Pressure Setting

Low-E

Round Shapes from Catalogue

Dynamic cleaning brush on the bottom

Retractable stops

Industrial vacuum cleaner for film extraction



**GFPM GTS 600 C – year 2006**

Linea da taglio vetro monolitico – visto e piaciuto  
Cutting table for monolithic glass – as is

Jumbo

Shape cut

Low- E

Working Dimensions 6720x3800 mm

Thickness 2 -19 mm

With belts



**BOTTERO CUTTING LINE**

**BOTTERO 340 BCS – year 2002**

Jumbo

Max Glass Size 6100x3300 mm

Thickness 3-25 mm

Speed 140 m/min.

**Bottero 100 BBM – year 2002**

Loading Table

Max Dimensions 6100 x 3300 mm



**OPTIONED**

W  
TR

**BOTTERO 545 VSX46<sup>e</sup> – year 2010**

Tavolo da taglio per il vetro laminato – vista e piaciuta  
Cutting table for laminating glass – as is

Max Dimensions: 4600 x 3210 mm  
Min. Dimensions 150 x 125 mm  
Thickness:  
- Monolithic 3-8 mm  
- Laminated (2 + 2) – (8+8)



**BOTTERO 520 LAM-37 - Year 2006**

Tavolo da taglio per il vetro laminato – vista e piaciuta  
Cutting table for laminating glass – as is

Fixed worktop with flap  
Air cushion  
Max cutting length 3700 mm  
Min. cutting length 250 mm  
Thickness 3-10 mm (monolithic)  
2+0,38+2 min. (laminated)  
8+4,56+8 max (laminated)  
Speed 100 m/min.  
Basic power installed 15 kW



**OPTIONED**

**BOTTERO 551 A– year 2001**

Tavolo da taglio per il vetro laminato – vista e piaciuta  
Cutting table for laminating glass – as is

Max cut: 4600 mm  
Low-E  
Maximum carriages speed 40 m/min  
Max. cutting tolerance +/- 0,5 mm  
Overall dimensions 4900 x 6100 mm



**CUTTING LINE BOTTERO – year 2010**

Linea da taglio per il vetro laminato – vista e piaciuta  
Cutting line for laminating glass – as is

**BOTTERO 545 VSX46<sup>e</sup>**  
Max Dimensions: 4600 x 3210 mm  
Min. Dimensions 150 x 125 mm  
Thickness:  
- Monolithic 3-8 mm  
- Laminated (2 + 2) – (8+8)

+

**BOTTERO 101 BLC – J**



## COMBINATED CUTTING LINE LISEC – year 2010

Cutting combined line for Glass – as is  
Linea da taglio combinata – vista e piaciuta

Max Dimensions 6000x3300 mm  
Min. Dimensions 1600x1600 mm

### Composition:

LISEC ATH 60/30 – (Automatic Loader)  
LISEC ESL-60/30RS – (Float Glass)  
LISEC VB-45 – (Laminated Glass)  
Thickness 6.4-18.3 mm  
LISEC BTH 60-30 – (Unloader)



## TAVOLI DI CARICO / LOADING TABLE

### BOTTERO 101 BLC-J – Year 2011

Tavolo di carico – visto e piaciuto  
Loading table – as is

Jumbo  
Dim.: 6000 x 3210 mm  
Tilting



### BOTTERO 101 BLC-J – Year 2010

Tavolo di carico – visto e piaciuto  
Loading table – as is

Jumbo  
Dim.: 6000 x 3210 mm  
Tilting



### BOTTERO 331 BKM – Year 2004

Table for raising and lowering large slabs – as is

Jumbo  
Tilting



## BOTTERO

Tavolo di carico – visto e piaciuto  
Loading table – as is

Jumbo size  
Dim.: 6000 x 3210 mm  
Breaking bars



## BOTTERO 507/CBM – Year 1997

Caricatrice – vista e piaciuta  
Double-Sided Loader– as is

Double Sided loader  
Max. Dimensions 3300 x 6100 mm  
Min. dim.:1500x1000 mm  
Thickness 2-19 mm



## BOTTERO 630 CBT – year 2005

Caricatrice – vista e piaciuta  
Double-Sided Loader– as is

Double Sided loader  
Jumbo

**OPTIONED**

living glass



## TAVOLI DA TAGLIO MANUALI / MANUAL CUTTING TABLES

AN

## ELETTROFLEX

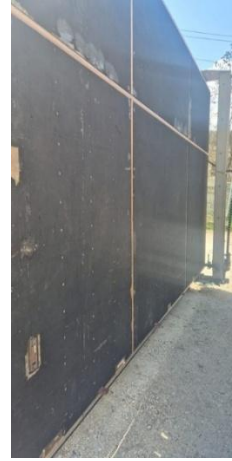
Tavolo da taglio vetro manuale – visto e piaciuto  
Manual cutting Table for Glass – as is



## BOLLA

Tavolo da taglio vetro semiautomatico – visto e piaciuto  
Semi-automatic glass cutting table – as is

Table Dim.: 2600 x 4200 mm



TR

## DF 6

Tavolo da taglio vetro manuale – visto e piaciuto  
Manual cutting Table for Glass – as is

With the rollers



## TAVOLI PER LAVORI ARTISTICI / TABLES FOR ARTISTIC WORKS

TR

## MACI –

Tavolo per lavorare il piombo - visto e piaciuto  
Table for working the lead – as is

For artistic glass



## MOLATRICI RETTILINEE / EDGING MACHINE

W

## LATTUADA AL4 E – year 2007

Molatrice rettilinea 4 mole – vista e piaciuta  
Straight line edging machine 4 wheels – as is

Flat edge : 12 mm  
Thickness: 3- 20 mm  
Dim. Min. : 60 x 150 mm  
Speed: 1,2 – 6 m/min  
Power: 6,5 kw



TR

R  
TR

### VITRODODI MINI BORDER F.P.

Molatrice rettilinea 4 mole – vista e piaciuta  
Straight line edging machine 4 wheels – as is

Minimum Glass Size 150×150 mm  
Glass Thickness 3-12 mm  
Power 5 kW  
Working Speed 0,65/3 mt/min



### SCHIATTI FPS SME 8 – Year 2017

Molatrice rettilinea 8 mole – vista e piaciuta  
Straight Line Edging Machine 8 wheels – as is

Min workable: 80 x 80 mm  
Thickness: 3-30 mm  
Speed 0.5 – 5,5 mt/min  
Power : 14 Kw  
Variable Angle: 0-45°



PU

### BOVONE ELB 10/45 – Year 2002

Molatrice rettilinea 10 mole – vista e piaciuta  
Straight Line Edging Machine 10 wheels – as is

Variable Angle  
Speed [M/Min] 0,35 – 5,4  
Arris Width [Mm] 5  
Miter Angle 0°÷45°  
Thickness [Mm] 3-30  
Electrical Power 400v 50hz 31kw 72°



TR

### BOVONE ELB 10/45 – Year 2009

Molatrice rettilinea 10 mole – vista e piaciuta  
Straight Line Edging Machine 10 wheels – as is

Variable Angle  
Speed [M/Min] 0,35 - 5,4  
Arris Width [Mm] 5  
Miter Angle 0°÷45°  
Thickness [Mm] 3-30  
Backrest Extension  
Electrical Power 400v 50hz 31kw 72a



### **BAVELLONI GEMY V10 – year 2004**

Molatrice rettilinea 10 mole – vista e piaciuta  
Straight line edging machine 10 wheels – as is

Thickness: 3 – 51 mm  
Variable angle: 0 – 45°  
Sheet min. height: 70 mm  
Working speed: 0,5 – 5 m  
Pneumatic supply: 8 bar  
Power 27 kW  
470000m

**OPTIONED**



### **BAVELLONI GEMY 11 – year 2002**

Molatrice rettilinea 11 mole – vista e piaciuta  
Straight line edging machine 11 spindles – as is

Min. workable: 35 x 35 mm  
Thickness: from 3 to 40 mm  
Power: 22 Kw  
Speed: from 0.5 to 5 Mt/min  
Worked meters: 230810



TR

### **NEPTUN ROCK 11 – Year 2012**

Molatrice rettilinea 11 mole – vista e piaciuta  
Straight line edging machine 11 wheels – as is

Thickness 3-40 mm  
Speed 0,5-5 m/min.  
Power 25 kW



W  
TR

### **BAVELLONI CR 1111 – year 1999**

Molatrice rettilinea 11 mole – vista e piaciuta  
Straight line edging machine 11 wheels – as is

Min. Dim. 50 mm  
Thickness 3-31 mm  
Speed 0-5 mt./min.  
Power 23,8 Kw

**OPTIONED**



### BATTELLINO FP5 – Year 2011

Molatrice rettilinea 5 mole – vista e piaciuta  
Straight line edging machine 5 spindles – as is

Min. thickness of the glass 3  
Max. thickness of the glass 20  
Min. dimensions of the glass 80X80  
Max. weight of the glass 100kg  
Speed 0-4 m/min



### BOTTERO TITAN – Year 2008

Linea di bilaterali – vista e piaciuta  
Double edger line – as is

Dim.: 2000x3000 mm  
**BOTTERO 228N-3M-BELT**  
**BOTTERO 224N-2M-BELT**  
Minimum glass size 230 x 230 mm  
Thicknesses 3 ÷ 30 mm  
Speed 1 ÷ 20 m/min (1 ÷ 30 m/min optional)  
Min. size Power 88.6 kW  
**2 TRANSFERS**



## INCISIONE / V- GROOVING MACHINERY

### GIEFFE GLASS 4001 CN – year 1998

Incisione rettilinea automatica – vista e piaciuta  
V-grooving machinery automatic – as is

Engraving H : 40 – 1000 mm  
Thickness: 3- 20 mm  
Dim. Min. : 150 x 150 mm  
Speed: 0,005 – 5 m/min  
Power: 6,5 kw



## BISELLATRICI/ BEVELLING MACHINE

### BAVELLONI B73 CNS – Year 1993

Bisellatrice – vista e piaciuta  
Bevelling Machine – as is

Min. Size plate: 40 x 40 mm  
Bevel Width 35 mm  
Thicknesses: 3 - 20 mm  
Working speed: 0 - 4 m / min.  
Angle: 3 - 45 °  
Bevel size: 50 mm  
Power: 17,1 kW



**MOLATRICI PER ANGOLI/ EDGER FOR CORNER**

TR

**DF 4**

Macchinario per incassi su angoli – vista e piaciuta  
Corner recessings machinery – as is



**MOLATRICI A NASTRO/ BELT EDGERS**

**QUARANTA – year 2001**

Doppio Nastro manuale – visto e piaciuto  
Double Manual belt – as is

Double belt



W

TR

**DF**

Nastro manuale – visto e piaciuto  
Manual belt – as is

H 1200 mm



**NASTRO BARETTA**

Nastro manuale – visto e piaciuto  
Single belt – as is

**QUARANTA MN 3350 / A – year 2005**

Nastro manuale – visto e piaciuto  
Single belt – as is

H 3300 mm



W

TR

**CARSAR**

Nastro manuale – visto e piaciuto  
Single belt – as is

H 2400 mm



TR

**CARSAR**

Nastro manuale – visto e piaciuto  
Single belt – as is

H 2400 mm



TR

**TREVISO**

Nastro manuale – visto e piaciuto  
Single belt – as is

H 1600 mm



TR

**CARSAR**

Nastro manuale – visto e piaciuto  
Single belt – as is

H 2400 mm



TR

**KRISTALL 2000**

Moletta per vetri artistici – vista e piaciuta  
Edger for artistic glass – as is



**MOLATRICI-SAGOMATRICI/ SHAPING EDGERS**

TR

**BAVELLONI SB10 – year 1990**

Sagomatrice – visto e piaciuto  
Shaped machine – as is

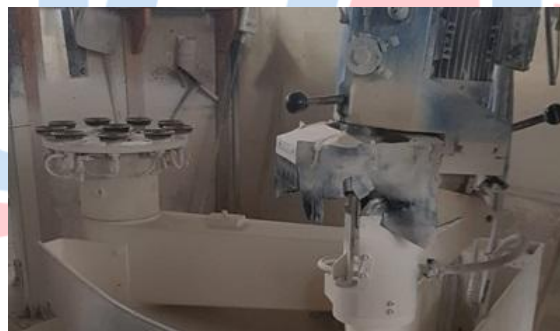
Min workable 100 mm  
Max workable 2100 mm  
Thickness 3-40 mm  
Max bevel 40 mm  
Power 3.5 kw



W  
TR

**GIEFFE POLISH – year 1997**

Macchina per filo lucido e lucidatura – visto e piaciuto  
Polishing machine – as is



TR

Tampone per lucidatura – visto e piaciuto  
Polishing pad – as is



\*  
W  
TR

**FELTRO DF AERO**

Tampone di sughero per lucidatura – visto e piaciuto  
Cork pad for polishing – as is



### TAMPONE

Tampone per lucidatura – visto e piaciuto  
Polishing pad – as is



W  
TR

### TAMPONE DF

Tampone per lucidatura – visto e piaciuto  
Polishing pad – as is



## BISELLATRICI SAGOMATO / SHAPED BEVELLERS

### BAVELLONI K4 – year 1996

Sagomatrice-bisellatrice – visto e piaciuto  
Shaping beveling machine – as is

Min. Dimensions 260 mm  
Max Dimensions 2600 mm  
Thickness 3 – 20 mm  
Bevel Width 0 – 40 mm  
Power 4 kW



W  
TR

### LATTUADA B45 – year 1998

Sagomatrice-bisellatrice – visto e piaciuto  
Shaping beveling machine – as is

Maximum dimension of round glass sheets 2.500 mm  
Minimum dimension (processing on the table) . 500 mm.  
Minimum dimension (processing with plateau) 120 mm.  
Maximum bevel width . 40 mm.  
Maximum bevel inclination model B/45 45°



W  
TR

### LATTUADA B 45 – year 1997

Sagomatrice – visto e piaciuto  
Shaping machine – as is

Max. dim. Of round glass sheets 2.500 mm  
Min. dim. (processing on the table) 500 mm.  
Min. dim. (processing with plateau) 120 mm.  
Max. bevel width . 40 mm.  
Max. bevel inclination model B/45 45°



TR

**VITRODODI – year 1996**

Sagomatrice – visto e piaciuto  
Shaping machine – as is

For polished edge



**FORNI DI TEMPERA/ TEMPERING FURNACES**

**MAPPI AU 1F 1S 900 1800 O.4 R.S.A. – year 2001**

Forno di Tempera – visto e piaciuto  
Tempering Furnace – as is

Max. glass dim.: 900X2000 mm  
Thickness: 4-19 mm



**MAPPI AU 1F 1S 1200 3000 O.4.S.**

Forno di Tempera – visto e piaciuto  
Tempering Oven – as is

Working dimensions 1200x3000 mm  
(Can do 1250 mm)  
Thickness 4-19 mm  
Overall dimensions 4300x16500 mm



**FORNI DI LAMINAZIONE/ LAMINATING FURNACES**

**PUJOL LAM/PRO 2840 – year 2018**

Forno di Laminazione – visto e piaciuto  
Laminating Furnace – as is

Max. working dim.: 2800x4000 mm  
Power 40 kW

**OPTIONED**



TR

### SAFF STRATIFICA – year 2008

Forno per laminazione e fusione – visto e piaciuto  
Laminating and fusion furnace – as is

Working dimensions 800x1800 mm  
Internal dimensions 2000x1000x400 mm (h)  
External dimensions 2500x2100x1500 mm (h)  
Temp. 850°  
Power 18 kW



### SOLARO MOD. 160 – Year 2016

Forno di Laminazione – visto e piaciuto  
Laminating Furnace – as is

Dim.: 1400 x 3200 mm



## FORNI DI FUSIONE/ FUSION FURNACES

### TORNATI TLE 200 – Year 1996

Forno per fusione– visto e piaciuto  
Fusion furnace – as is

Working Dimensions 1000 x 2000 mm  
Power 27,4 kW  
Operating Temperature 850°  
Time to Reach Operating Temperature 45-120 m  
Overall Dimensions 2400x1260x520 mm  
Weight 500 Kg



TR

### VEGA INTERNATIONAL

Forno per fusione– visto e piaciuto  
Fusion furnace – as is

Dim.: 1100x900 mm  
Temperatura: 900°C



## CENTRI DI LAVORO VERTICALE/ VERTICAL CNC

### ZAFFERANI AZV MILL 1000 – Year 2022

Vertical CNC Drilling/Milling Machine – as is  
Foratrice/fresatrice verticale – vista e piaciuta



## LINEA PER LAMINAZIONE PVB / LAMINATING PVB LINE

### LISEC PVB LAMINATION LINE

Linea per laminazione del vetro– visto e piaciuto  
Laminating glass line – as is

Composed of:

TERRUZZI Autoclave – Year 2007  
Washing Machine LISEC HVM26B6 – Year 2015  
White Room  
Mangle  
Dimensions 6000x3000 mm



## TRAPANI ORIZZONTALI/ HORIZONTAL DRILLING MACHINES

### BAVELLONI VT 1250 – year 2004

Trapano orizzontale – visto e piaciuto  
Horizontal drilling machine – as is

2 Heads  
Laser

Thickness 3-25 mm (Both drills)  
Max thickness (1 drill) 50 mm  
Min. glass size 100x100 mm  
Hole diameter (2 drills) 4-130 mm  
Max hole diameter (1 drill) 220 mm  
Speed 390-5220 rpm  
Power 3,5 kW



### INTERMAC BUSETTI GIO' 1250 – year 2005

Trapano orizzontale automatico – visto e piaciuto  
Automatic Horizontal drilling machine – as is

2 heads  
Glass thickness : 3-38 mm  
Drilling range along Y-axis 0-1250 mm  
Drilling range along X-axis 0-1450 mm



W  
TR

**POLYMEC – year 2008**

Trapano orizzontale – visto e piaciuto  
Horizontal drilling machine – as is

2 heads



TR

**ADA**

Trapano orizzontale – visto e piaciuto  
Horizontal drilling machine – as is

2 heads



W  
TR

**BARETTA 2T – year 2004**

Trapano orizzontale – visto e piaciuto  
Horizontal drilling machine – as is

2 heads



TR

**BARETTA PROFILI**

Trapano orizzontale – visto e piaciuto  
Horizontal drilling machine – as is

1 head



**NUOVA ARZANO EB 16 – year**

Trapano orizzontale – visto e piaciuto  
Horizontal drilling machine – as is

1 head



W  
TR

**MAVER TM 1 T SUPER CONDOR 16B – year 2008**

Trapano orizzontale – visto e piaciuto  
Horizontal drilling machine – as is

1 head



W  
TR

**BOLLA AUDAX 15 –year 1996**

Trapano orizzontale – visto e piaciuto  
Horizontal drilling machine – as is

1 heads



**MACI**

Trapano orizzontale – visto e piaciuto  
Horizontal drilling machine – as is

1 heads



BELLUCCI  
living glass

**LAVATRICI VERTICALI/ VERTICAL WASHING MACHINES**

**LISEC WHV 250 – year 1993**

Lavatrice verticale – vista e piaciuta  
Vertical Washing Machine – as is

H 2500 mm  
6 brushes



### **MARVAL – Year 2002**

Lavatrice verticale – vista e piaciuta  
Vertical Washing Machine – as is

H 2500 mm  
4 spazzole  
Low-E



### **MARVAL ST – Year 2020**

Lavatrice verticale – vista e piaciuta  
Vertical Washing Machine – as is

H1600 mm  
4 Brushes  
Low-E  
Open Top



### **SCV SYSTEM WM 1700/4 – Year 2011**

Lavatrice verticale – vista e piaciuta  
Vertical Washing Machine – as is

H 1700 mm  
4 Brushes



## **LAVATRICI ORIZZONTALI HORIZONTAL WASHING MACHINES**

TR

### **ROYAL GLASS – year 2006**

Lavatrice orizzontale – vista e piaciuta  
Horizontal Washing machine – as is

4 Brushes  
Lenght 2000 mm



N

### BOVONE 130 - year 1990

Lavatrice orizzontale – vista e piaciuta  
Horizontal Washing machine – as is

4 brushes



W

TR

### MALNATI T SERIE

Lavatrice orizzontale – vista e piaciuta  
Horizontal Washing machine – as is

Maximum glass size: 1100 mm  
Minimum washable dimensions (mm) 100 x 100  
Washable thicknesses (mm) 3 – 19  
Manual thickness adjustment  
Work speed (m/min) 1 – 4



### MALNATI

Lavatrice orizzontale – vista e piaciuta  
Horizontal Washing machine – as is



## LINEE VETROCAMERA / INSULATING GLASS LINES

### LINEA FOREL – year 2009

Linea di vetrocamera – vista e piaciuta  
Insulating Glass Line – as is

Composition:

- Washing Machine (6 brushes) FOREL VW2500 (2009)
  - Scanner LISEC (2014)
  - Gas Press FOREL APG 250 (2009)
- Working Direction Right to Left



### MARVAL A25T6 DX - Year 2002

Linea di vetrocamera – vista e piaciuta  
Insulating Glass Line – as is

Washing Machine  
Roll Press  
Tilting Table  
H 2500  
4 Brushes  
Max. thickness: 50 mm  
Working Direction Right to Left  
Overall Dimensions 15 m + 4 m (Tilting Table)



## ACCESSORI PER LINEE VETROCAMERA / ACCESSORIES FOR INSULATING GLASS LINES

### LISEC VFL 1F – Year 2009

Sigillatrice automatica – vista e piaciuta  
Automatic Sealing Machine – as is

H 2000 mm  
Working Direction Right to Left



### LISEC GSL- 25 B – year 2014

Scanner for Single Sheets and Insulating Glass – as is  
Scanner per lastre singole e vetro isolante – visto e piaciuto

Glass height 2000 mm  
Maximum length 6.000 mm  
Glass thickness 2 - 100 mm  
Transport speed 48 m/min at 200 dpi (no interpolation)  
Scan technology 16 bit Scanmodule (LIS – Linear Image Sensor)  
Light transmission 15 – 99 %



TR

### FOREL PBN 6.32 A4 - Year 2008

Piegaprofilo automatica – vista e piaciuta  
Automatic Profile Bender – as is

Acceptable spacer hollow profiles from 6 to 32 mm.  
Minimum spacer frame dimensions (rectangular reference) 100 mm x 150 mm  
Maximum spacer frame dimensions (rectangular reference) 1600 mm x 2000 mm  
Shapes allowed infinite  
Edge bending from 0° to 155°



**LISEC A1RL – year 2007**

Caricasali automatica – visto e piaciuto  
Automatic Dessicant loader – as is



TR

**LISEC A1RL – year 2004**

Caricasali automatica – visto e piaciuto  
Automatic Dessicant loader – as is

Profile width 6 - 24 mm  
Profile height 6 - 8,5 m  
Minimum size 150 x 150 mm



**NDS**

Caricasali Manuale – visto e piaciuto  
Manual Dessicant loader – as is



**FOREL T1200 EA8 – year 2009**

Estrusore bicomponente – visto e piaciuto  
Bicomponent Extruder – as is



**GRACO D200**

Estrusore – visto e piaciuto  
Extruder – as is



**GRACO**

Estrusore bicomponente – visto e piaciuto  
Two -component extruder – as is



**GRACO K03C**

Estrusore – visto e piaciuto  
Extruder – as is



**LISEC LBH 25 V – year 2008**

Butilatrice – vista e piaciuta  
Butil – as is



### FOREL MB 7501 – year 2013

Butilatrice – vista e piaciuta  
Butil – as is

Spacer thickness MIN – MAX (mm) 6- 32  
Layer of butyl (kg) 7.5



### MARVAL L 75 B – year 2010

Butilatrice – vista e piaciuta  
Butil – as is



### FOREL 1025 - year 1999

Butilatrice – vista e piaciuta  
Butil – as is

KG 2,5



### POLYGLASS BUT 1K – Year 2010

Butilatrice – vista e piaciuta  
Butil – as is

1 Kg



### BATTELLINO BK 100 LX – Year 2011

Butilatrice – vista e piaciuta  
Butil – as is

Pneumatic pressure 7atm  
Compressed air required max 10 lt  
Dimensions 2100 x 490 x 1000mm  
Speed 0 -18 Mt/min  
Nozzle opening 6 - 32 mm  
Used butyl 1 kg



W

TR

**EMAR M101 - Year 2000**

Estrusore hot melt – visto e piaciuto  
Hot melt extruder – as is



W

TR

**MARVAL L 35/P - Year 1996**

Estrusore hot melt – visto e piaciuto  
Hot melt extruder – as is

35 Liters  
Power : 8,5 kW - 380 V



TR

**MARVAL L 35/P**

Estrusore hot melt – visto e piaciuto  
Hot melt extruder – as is

35 Liters  
Power 8,5 kW - 380 V  
900 x 550 x 1350 (h)  
Weight 260 Kg



T

**NUOVA ARZANO**

Miscelatore per silicone – visto e piaciuto  
Silicone mixer – as is



**IDROTECNICA DRO RO 60 – year 2008**

Demineralizzatore acqua ad osmosi inversa – visto e  
piaciuto  
Reverse osmosis water demineralizer – as is



**IDRO RO 130 ST – Year 2016**

Demineralizzatore acqua ad osmosi inversa – visto e  
piaciuto  
Reverse osmosis water demineralizer – as is

portata (flow) 130 l/min.  
Max pressure 14 bar



TR

**SILEMECCANICA**

Tavolino girevole – visto e piaciuto  
Turnable table – as is



living glass

**MARVAL**

Tavolino girevole – visto e piaciuto  
Turnable table – as is



## BATELLINO

Tavolino girevole – visto e piaciuto  
Turnable table – as is

Glass dimensions  
Max. dimensions 2000x1000 mm  
Min. dimensions 150x150 mm  
Max. weight 80 Kg  
Power supply 220 V 50 Hz  
Installed power 0,2 KW  
Compressed air required Max. 6 bar  
Air consumption 13 lt/min



## TECNOGLASS TDK 3000 PLUS – year 2014

Tagliaprofili – vista e piaciuta  
Cutting Frame Machine – as is

Power supply 380 V Triphase 50 Hz  
Pneumatic pressure 6 bar  
Aluminium cutting disk diameter 250 mm  
Steel cutting disk diameter 250 mm  
Cutting range min 70 – max 3100 mm  
Cutting precision 0,1 mm  
Positioning speed 1,5 m/sec



## FOREL 200/A – year 2002

Tagliaprofili – vista e piaciuta  
Cutting Frame Machine – as is



## BATELLINO MODEL S – Year 2011

Tagliaprofili – vista e piaciuta  
Cutting Frame Machine – as is

Arms dimension 3000mm  
Blade dimension Ø 216 Z200  
Pneumatic pressure regulator  
Measurement accuracy +/- 0,01 mm  
Compressed air required  
Installed power 1 kW  
Power supply 380V 50Hz



**MARVAL – year 2013**

Freezer – visto e piaciuto

Gas R 404  
Power 2 kW



**FOREL – year 1993**

Freezer – visto e piaciuto



**CARICAGAS FOREL – year 2008**

Caricagas automatica – vista e piaciuta  
Automatic gas filler – as is

4-channel gas charger



N

**FOREL**

Piegaprofili manuale – vista e piaciuta  
Manual profile bending machine – as is

for circles



## FOREL

Piegaprofili manuale – vista e piaciuta  
Manual profile bending machine – as is

for circles



## SABBIATRICI MANUALI VERTICALI/ MANUAL SANDBLASTING MACHINES

### PEZZA MISTRAL 120 - Year 2000

CABINA DI SABBIATURA AUTOMATICA/MANUALE A  
CONTROLLO NUMERICO – vista e piaciuta  
AUTOMATIC/MANUAL SAND-BLASTING CABINET WITH  
NUMERICAL CONTROL – as is

Max Dim. 1200 mm  
Min. Dim. 200x200 mm  
Thickness 1-50 mm  
Speed 1 m<sup>2</sup>=4/5 min.  
Air Consumption 800 Lt/min.  
Power 2 kW



### CRS 180 A 32 – Year 2018

Sabbiatrice automatica – visto e piaciuto  
Automatic sandblasting machine – as is

H 1800 mm  
32 zone  
2 pistole automatiche  
Open Top



### PEZZA GHIBLI 60 - year 2000

Sabbiatrice manuale – visto e piaciuto  
Sandblasting machine manual – as is

Power : 0,8 kw



TR

**SOLARO – year 2007**

Sabbiatrice manuale – visto e piaciuto  
Sandblasting machine - manual – as is

H 1300 mm



W

TR

**BARETTA – year 1999**

Sabbiatrice manuale – visto e piaciuto  
Sandblasting machine - manual – as is

H 1400 mm



**SABBIATRICI MANUALI ORIZZONTALI / HORIZONTAL SANDBLASTING MACHINES**

W

TR

**PEZZA SAHARA 1000 SPECIAL – year 1997**

Sabbiatrice orizzontale – visto e piaciuto  
Sandblasting machine – Horizontal – as is

Max Glass Size 1000 mm  
Min. Glass Size 200x200 mm  
Speed 0,5 mq/min.  
Sand Blasting Guns n. 4  
Power 5 kW



TR

**OFFICINE BELLUCCI AVS 27 – year 2024**

Sabbiatrice portatile – visto e piaciuto  
Portable Sandblaster – as is

Voltage 230/240 V 50/60 Hz  
Power Nom./Max 1100/1350 W  
Air flow 54 l/sec. Mq/Min. 3,24  
Water lift 220 mBar  
Effective capacity 27 l  
Noise level 70 dB



W

TR

**SABBIA PER SABBIATRICE**

**CORIDONE 120**



**RBB – year 2017**

Classificatore semiautomatico– visto e piaciuto  
Semiautomatic Storage Rack – as is

- Jumbo
- 17 Positions
- 1 fixed trolley, 400 mm platform
- 16 mobile trolleys, 250 mm platform
- Cylinder stroke: 900 mm
- 380 V 50 Hz
- Overall dimensions 7300 x 6400 mm



**RBB – year 2001**

Classificatore semiautomatico– visto e piaciuto  
Semiautomatic Storage Rack – as is

- Half size
- 47 pos. Mobile
- 1 pos. Fixed



**CLASSIFICATORE MANUALE**

Classificatore Manuale – visto e piaciuto  
Manual Storage Rack – as is

- 10 pos.



TR

Carelli portavetro – visto e piaciuto  
Racks for glass – as is



TR

### DELLA PICCOLA

Carelli portavetro – visto e piaciuto  
Racks for glass – as is



TR

### GAR-SAVE

Carello per casse di vetro – visto e piaciuto  
Rack for box of glass – as is



### PINZE- VENTOSE / CLAMP - VACUUM

#### OMIS

Gru a bandiera - vista e piaciuta  
Jib crane – as is

Capacity' 250 Kg



#### OMIS OPE 308 4T 7N - Year 2009

Carroponte  
Electric Overhead Crane

Double-girder structure with profiled beam  
Capacity 3,2 t  
Gauge 11,56 m  
Hook stroke 6 m



**RBB – Year 2002**

Scaricatore – visto e piaciuto  
Unloader – as is



**SINGLE LIFT VA-500 – year 2026**

Ventosa 6 patte– vista e piaciuta  
Vacuum 6 patte – as is

Box Dimension 1535x625x475 mm 35kg ± 2  
Number Of Pads 2+4  
Machine Weight 80kg ± 2  
Electric System 12 V 14Ah  
Pad Diameter 290 mm  
Max. Workload 500kg  
Manual Tilting Angle 0°/90°  
Manual Turning Angle 360°



**PANNKOKKE 7000-A – year 1996**

Ventosa 4 patte– vista e piaciuta  
Vacuum 4 patte – as is

Capacity: 600 kg  
suction cup type 388



TR

**BESANA 8U – year 1996**

Ventosa 8 patte– vista e piaciuta  
Vacuum 8 patte – as is

Capacity 1200 Kg



**RBB 12 P.GM.BM. – year 2002**

Ventosa 12 patte– vista e piaciuta  
Vacuum 12 patte – as is

Capacity 1080 Kg  
12 Fastening Points  
Min. Plate Dimensions 1100x1400 mm  
Weight 170 Kg  
Powered Rotation and Tilt



**RBB 12 P.F. – year 2002**

Ventosa 12 patte– vista e piaciuta  
Vacuum 12 patte – as is

Fixed Suction Cup Unit  
Capacity 1080 Kg  
12 Fastening Points  
Min. Plate Dimensions 3300x1600 mm  
Weight 177 Kg



**RBB 4 P.G.– Year 2003**

Ventosa 4 patte– vista e piaciuta  
Vacuum 4 patte – as is

Manual Rotation  
Capacity 360 Kg  
4 Fastening Points  
Min. Plate Dimensions 600x800 mm  
Weight 104 Kg



TR

**ATA GPR2RR - Year 1993**

Ventosa girevole 2 patte– vista e piaciuta  
Rotating suction cup unit 2 patte – as is

Load capacity 250 kg



Carrello trasporto lastre di vetro – visto e piaciuto  
Glass sheet transport trolley – as is



TR

### **WEHA MAMMUT – NEW**

Ventosa manuale – vista e piaciuta  
Manual vacuum – as is

Dim: 500x255x250 mm  
Suction plate diameter: 200 mm  
Wight: 5,5 kg



TR

### **ELEPHANT**

Pinza portavetro – vista e piaciuta  
Clamp – as is

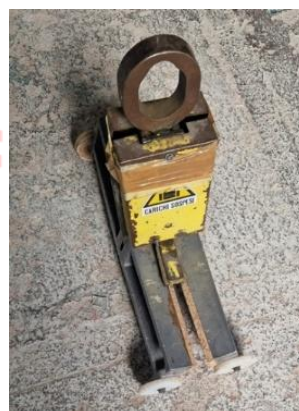
Capacity: 250 KG



### **PINZA**

Pinza portavetro – vista e piaciuta  
Clamp – as is

**OPTIONED**



TR

### **BOTTERO F – Year 2010**

Pinza portavetro – vista e piaciuta  
Clamp – as is

Thickness 32-42 mm  
Capacity 1000 Kg



TR

**BOTTERO D – Year 2007**

Pinza portavetro – vista e piaciuta  
Clamp – as is

Thickness 10-22 mm  
Capacity 1000 Kg



TR

**MAVER – year 2006**

Pinza portavetro – vista e piaciuta  
Clamp – as is

Capacity 1000 Kg



TR

**BOTTERO C-750/32 – Year 2002**

Pinza portavetro – vista e piaciuta  
Clamp – as is

Thickness 4-16 mm  
Capacity 800 Kg



TR

**BOTTERO F/750 – year 2000**

Pinza portavetro – vista e piaciuta  
Clamp – as is

Thickness: 15-30 mm  
Capacity': 1.000 kg



N

**BOTTERO – Year 1999**

Pinza portavetro – vista e piaciuta  
Clamp – as is

Capacity': 750 kg



TR

**BOTTERO C/750 – year 1995**

Pinza portavetro – vista e piaciuta  
Clamp – as is

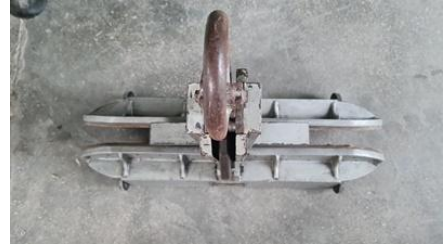
Capacity': 800 kg



TR **BOTTERO F/750 EXPORT – year 1980**

Pinza portavetro – vista e piaciuta  
Clamp – as is

Capacity': 1.000 kg



TR **OTTERO C/750 EXPORT – year 1976**

Pinza portavetro – vista e piaciuta  
Clamp – as is

Capacity': 1.000 kg



TR **OTTERO C/750 EXPORT – year 1976**

Pinza portavetro – vista e piaciuta  
Clamp – as is

Capacity': 1.000 kg



W  
TR **BESANA – year 1997**

Pinza portavetro – vista e piaciuta  
Clamp – as is

Capacity': 600 kg



W  
TR **BOLLA**

Ventosa manuale – vista e piaciuta  
Manula vacuum – as is



W  
TR **VENTOSA**

Ventosa manuale – vista e piaciuta  
Triple suction cups – as is



**CARRELLO PORTA SCARTI DI VETRO**

Visto e piaciuto/ as is



**FIAC NEW SILVER 7,5 – year 2016**

Compressore rotativo a vite Con depuratore del aria  
Shamal – visto e piaciuto  
Rotary screw compressor With Shamal air purifier – as is



**SHAMAL SILENTE ZT751 SD - year 2004**

Compressore a pistoni – visto e piaciuto  
Piston Compressor – as is

Power 4 kW 5,5 Hp  
Pressure 10 Bar  
Tank 3 Lt.



TR

**ATLAS COPCO GA 7 P - year 1998**

Compressore – visto e piaciuto  
Compressor – as is

With dryer  
Power 7.5 kW  
Pressure 10 Bar  
Free air delivery: 15.5 l/s



**FIAC - Year 2020**

Compressore – visto e piaciuto  
Compressor – as is

500 l  
Max Press 20 bar  
Air consumption 830 l/min.  
Power 5,5/7,5 kW/Hp  
Weight 255 Kg



**TR FINI E.C BK19-270-5,5 TP 40050 EU R- Year 2001**

Compressore a cinghia – visto e piaciuto  
Belt compressor – as is

Tank 270 l  
Power 5.5 Hp kW 4  
Air intake 460 l/min. Pressure 10 bar



**W  
TR**

**PLOTTER SUMMA**

Vinyl cutter - visto e piaciuto  
Vinyl cutter – as is



living glass

**W  
TR**

**PLOTTER SUMMA D620**

Vinyl cutter - visto e piaciuto  
Vinyl cutter – as is

Computer control  
Max. cut: 600x50mm  
Thickness: 0,002 mm – 0,030 mm



**BIDONE ASPIRALIQUIDI**



T

**RIELLO GP 405 – year 1997**

Generatore d'aria calda pensile a gas – visto e piaciuto  
Gas-fired hot air generator - as is

Launch distance : 26m  
Helical fan : 1,300 rev./min.  
Voltage : 230 V, 50 Hz, 240 W



TR

**BOHLE**

Compasso per tagliare cerchi e ovali  
Compass for cutting circles and ovals – as is



W

TR

**DF – year 2003**

Granigliatrice – vista e piaciuta  
Shotblasting machine – as is

3 Drawers



W

TR

**APB IP66**

Inverter for modulate the tension



W  
TR

**PROXXON**

Seghetto per blindati – visto e piaciuto  
Blindovis cutting saw – as is



W  
TR

**BOLLA – year 1997**

Macchina per tacche – visto e piaciuto  
Notches machine – as is



**MACCHINE PORTATILI / PORTABLE MACHINES**

TR

**REGGIATRICE  
STRAPPING MACHINE**



TR

**MAKITA**

Seghetto portatile – visto e piaciuto  
Portable saw – as is



TR

**TESTER FOR INSULATING GLASS**

**MARTINI EC – 59**  
Pocketsize  
EC/TDS/°C/°F meter

**GRACE PHONOSORB DELTA T TEST  
PESOLA KIT**  
Max. 30 gr



**LML STAR LITE B70 - Year 2018**

Costruttore LML LIMITED  
 Motociclo per trasporto persone - uso proprio  
 Cilindrata 125 cc  
 Alimentazione: benzina  
 Euro 3  
 Cambio automatico  
 Pneumatici:  
 Anteriore 3,5-10 51J  
 Posteriore 3,5-10 51J  
 Freni:  
 Anteriore a disco  
 Posteriore a tamburo

**FORD TRANZIT 350 – year 2006**

Autocarro per trasporto di cose – as is

**CAMION IVECO 75 E 15 EURO CARGO – year 2002**

PATENTE C  
 Km 189000  
 Lunghezza cassone : 4.50 m  
 FASSI GRU IDRAULICHE F40A.24  
 Lunghezza del braccio: 9,15 m  
 Portata max.: 945 kg

**PIAGGIO PORTER – year 2016**

Furgone - visto e piaciuto

1300 cc  
 Benzina  
 Km 113500 KM



**ALFA ROMEO STELVIO 2.2 Q4 190 CV – year 2020**

Autovettura – vista e piaciuta

Gasolio



**JUNGHEINRICH EFG 320 – year 2005**

Muletto per il trasporto delle cose – visto e piaciuto

Forklift – as is



**MACCHINARI PER LAVORAZIONE DEL FERRO/ IRON PROCESSING MACHINERY**

**SERRMAC**

Trapano orizzontale – visto e piaciuto  
Horizontal drilling machine – as is

For iron



**VALEX MG 16 - Year 1989**

Trapano a colonna – visto e piaciuto  
Column drill - as is

Max hole diameter: 16 mm  
Drill vices: 2



TR

### DITTA CROTTI E FIGLIO

Bascula pesa ferro – visto e piaciuto  
Iron weighing scale – as is



### ATLAS COPCO B4-32 + DDH 32- RP

Trapano rotante per forature di grande diametro – visto  
e piaciuto  
Heavy duty rotary drill for large diameter drilling – as is

**DDH 32- RP** : 230 v, 50 hz, 110w, 1,6 A  
**B4-32:** 220-230 V, 50-60 HZ, 5,3 A, 1050 W  
Diametro: 32 mm



T

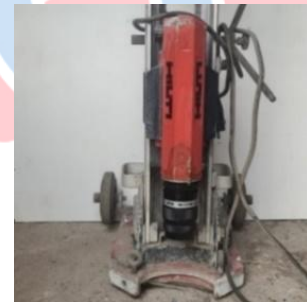
### BOSCH

Trapano Manuale – visto e piaciuto  
Manual Driller - as is  
V 220  
A 22  
W 420  
RPM 720/min.



### HILTI DCM 1.5

Carotatrice con punta diamantata – vista e piaciuta  
Diamond Core Machine Drill – as is



TR

### VERDINI Fast S56H

Martello demolitore – visto e piaciuto  
Demolition Hammer – as is



### MILWAUKEE 18 POWER PLUS

Trapano avvitatore – visto e piaciuto  
Drill driver – as is

