



08/04/2026

**TAVOLI DA TAGLIO PER VETRO MONOLITICO / CUTTING TABLES FOR MONOLITIC GLASS**  
**GRANDI LASTRE / JUMBO GLASS**

**LISEC GFB 60/30 –Year 2007**

Tavolo da taglio vetro monolitico – visto e piaciuto  
Cutting Table for Monolithic Glass – as is

- MaxDimensions 6000x3300
- Thickness 3-19 mm
- Speed 120 m/min.
- Precision +- 0, 2 mm
- Power 13 kW
- Automatic Cut Pressure Setting
- Low-E
- Round Shapes from Catalogue
- Dynamic cleaning brush on the bottom
- Retractable stops
- Industrial vacuum cleaner for film extraction



**BOTTERO 340 BCS EVO – year 2011**

Tavolo da taglio vetro monolitico – visto e piaciuto  
Cutting Table for Monolithic Glass – as is

- Jumbo size
- Max Glass Size 6100x3300 mm
- Thickness 3-25 mm
- Speed 140 m/min.
- Precision +- 0.15 mm
- Power 16 kW



**GFPM GTS 600 C – year 2006**

Linea da taglio vetro monolitico – visto e piaciuto  
Cutting table for monolithic glass – as is

- Jumbo
- Shape cut
- Low- E
- Working Dimensions 6720x3800 mm
- Thickness 2 -19 mm
- With belts



**LINEE DA TAGLIO PER VETRO MONOLITICO / CUTTING LINES FOR MONOLITIC GLASS**  
**GRANDI LASTRE / JUMBO GLASS**

TR

**BOTTERO CUTTING LINE**

**BOTTERO 507/CBM – Year 1997**

Jumbo  
 Double-Sided Loader  
 6 Positions per Side  
 Thickness 2-19 mm

+

**BOTTERO 340 BCS-J EVO - Year 2011**

Jumbo  
 Max Glass Size 6100x3300 mm  
 Thickness 3-25 mm  
 Speed 140 m/min.

+

**BOTTERO 100 BBM-J – Year 2011**

Loading Table  
 Max Dimensions 6100 x 3300 mm  
 Thickness 2-19 mm



**TAVOLI DA TAGLIO PER VETRO LAMINATO / CUTTING TABLES FOR LAMINATING GLASS**

W

TR

**BOTTERO 551 A– year 2001**

Tavolo da taglio per il vetro laminato – vista e piaciuta  
 Cutting table for laminating glass – as is

Max cut: 4600 mm  
 Low-E  
 Maximum carriages speed 40 m/min  
 Max.cutting tolerance +/- 0,5 mm  
 Overall dimensions 4900 x 6100 mm



**LINEE DA TAGLIO COMBINATI / COMBINATED CUTTING LINES**

**COMBINATED CUTTING LINE BOTTERO – year 2023**

Cutting combined line for Glass – as is  
 Linea da taglio combinata – vista e piaciuta

Max cutting length 3800 mm

Composition:  
 BOTTERO 548 LAM  
 BOTTERO 363 EVO



**COMBINATED CUTTING LINE LISEC – year 2010**

Cutting combined line for Glass – as is  
 Linea da taglio combinata – vista e piaciuta

Max Dimensions 6000x3300 mm  
 Min. Dimensions 1600x1600 mm

**Composition:**

LISEC ATH 60/30 – (Automatic Loader)  
 LISEC ESL-60/30RS – (Float Glass)  
 LISEC VB-45 – (Laminated Glass)  
 Thickness 6.4-18.3 mm  
 LISEC BTH 60-30 – (Unloader)



TR

**BOTTERO 103 BBM-J – year 2016**

Tavolo di carico – visto e piaciuto  
Loading table – as is

Jumbo size  
Breaking bars



**BOTTERO 101 BLC-J – Year 2011**

Tavolo di carico – visto e piaciuto  
Loading table – as is

Jumbo  
Tilting



**BOTTERO 101 BLC-J – Year 2010**

Tavolo di carico – visto e piaciuto  
Loading table – as is

Jumbo  
Tilting



**BOTTERO 331 BKM – Year 2004**

Table for raising and lowering large slabs – as is

Jumbo  
Tilting



## **BOTTERO**

Tavolo di carico – visto e piaciuto  
Loading table – as is

Jumbo size  
Breaking bars



## **BOTTERO 507/CBM – Year 1997**

Double-Sided Loader– as is

6 Positions  
Double Sided loader  
Max. Dimensions 3300 x 6100 mm  
Min. dim.:1500x1000 mm  
Thickness 2-19 mm



## **TAVOLI DA TAGLIO MANUALI / MANUAL CUTTING TABLES**

AN

### **ELETTROFLEX**

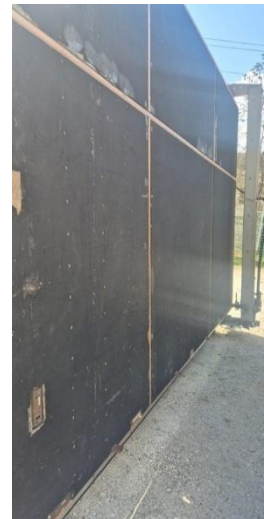
Tavolo da taglio vetro manuale – visto e piaciuto  
Manual cutting Table for Glass – as is



### **BOLLA**

Tavolo da taglio vetro semiautomatico – visto e piaciuto  
Semi-automatic glass cutting table – as is

Max. cut: 2600 x 4500 mm



TR

**DF 6**

Tavolo da taglio vetro manuale – visto e piaciuto  
Manual cutting Table for Glass – as is

With the rollers



**TAVOLI PER LAVORI ARTISTICI/ TABLES FOR ARTISTIC WORKS**

TR

**MACI –**

Tavolo per lavorare il piombo - visto e piaciuto  
Table for working the lead – as is

For artistic glass



**MOLATRICI RETTILINEE / EDGING MACHINE**

W

**LATTUADA AL4 E – year 2007**

Molatrice rettilinea 4 mole – vista e piaciuta  
Straight line edging machine 4 wheels – as is

Flat edge : 12 mm  
Thickness: 3- 20 mm  
Dim. Min. : 60 x 150 mm  
Speed: 1,2 – 6 m/min  
Power: 6,5 kw



R

**VITRODODI MINI BORDER F.P.**

Molatrice rettilinea 4 mole – vista e piaciuta  
Straight line edging machine 4 wheels – as is

Minimum Glass Size 150x150 mm  
Glass Thickness 3-12 mm  
Power 5 kW  
Working Speed 0,65/3 mt/min



TR

PU

### **BOVONE ELB 10/45 – Year 2002**

Molatrice rettilinea 10 mole – vista e piaciuta  
Straight Line Edging Machine 10 wheels – as is

Variable Angle  
Speed [M/Min] 0,35 – 5,4  
Arris Width [Mm] 5  
Miter Angle 0°÷45°  
Thickness [Mm] 3-30  
Electrical Power 400v 50hz 31kw 72°



TR

### **BOVONE ELB 10/45 – Year 2009**

Molatrice rettilinea 10 mole – vista e piaciuta  
Straight Line Edging Machine 10 wheels – as is

Variable Angle  
Speed [M/Min] 0,35 - 5,4  
Arris Width [Mm] 5  
Miter Angle 0°÷45°  
Thickness [Mm] 3-30  
Backrest Extension  
Electrical Power 400v 50hz 31kw 72a



TR

### **NEPTUN ROCK 11 – Year 2012**

Molatrice rettilinea 11 mole – vista e piaciuta  
Straight line edging machine 11 wheels – as is

Thickness 3-40 mm  
Speed 0,5-5 m/min.  
Power 25 kW



TR

### **BAVELLONI GEMY V10 – year 2004**

Molatrice rettilinea 10 mole – vista e piaciuta  
Straight line edging machine 10 wheels – as is

Thickness: 3 – 51 mm  
Variable angle: 0 – 45°  
Sheet min. height: 70 mm  
Working speed: 0,5 – 5 m  
Pneumatic supply: 8 bar  
Power 27 kW  
470000m



W  
TR

### **BAVELLONI CR 1111 – year 1999**

Molatrice rettilinea 11 mole – vista e piaciuta  
Straight line edging machine 11 wheels – as is

Min. Dim. 50 mm  
Thickness 3-31 mm  
Speed 0-5 mt./min.  
Power 23,8 Kw

**OPTIONED**



W  
TR

### **BAVELLONI GEMY 11 – year 2002**

Molatrice rettilinea 11 mole – vista e piaciuta  
Straight line edging machine 11 spindles – as is

Min. workable: 35 x 35 mm  
Thickness: from 3 to 40 mm  
Power: 22 Kw  
Speed: from 0.5 to 5 Mt/min  
Worked meters: 230810



### **BATTELLINO FP5 – Year 2011**

Molatrice rettilinea 5 mole – vista e piaciuta  
Straight line edging machine 5 spindles – as is

Min. thickness of the glass 3  
Max. thickness of the glass 20  
Min. dimensions of the glass 80X80  
Max. weight of the glass 100kg  
Speed 0-4 m/min



### **BOTTERO TITAN – Year 2008**

Linea di bilaterali – vista e piaciuta  
Double edger line – as is

Dim.: 2000x3000 mm  
**BOTTERO 228N-3M-BELT**  
**BOTTERO 224N-2M-BELT**  
Minimum glass size 230 x 230 mm  
Thicknesses 3 ÷ 30 mm  
Speed 1 ÷ 20 m/min (1 ÷ 30 m/min optional)  
Min. size Power 88.6 kW  
**2 TRANSFERS**



## INCISIONE / V- GROOVING MACHINERY

W

### GIEFFE GLASS 4001 CN – year 1998

TR

Incisione rettilinea automatica – vista e piaciuta  
V-grooving machinery automatic – as is

Engraving H : 40 – 1000 mm  
Thickness: 3- 20 mm  
Dim. Min. : 150 x 150 mm  
Speed: 0,005 – 5 m/min  
Power: 6,5 kw



## BISELLATRICI / BEVELLING MACHINE

W

### BAVELLONI MAX 80 CNP –year 2011

TR

Bisellatrice – vista e piaciuta  
Bevelling machine – as is  
13 Cup Wheels Beveller  
Min. Size 40x40 mm  
Speed 0,5-4,1 m/min.  
Thickness 3-25 mm  
Max Bevel Width 60 mm  
Power 26 kW  
Worked Meters: 214662

**OPTIONED**



TR

### BAVELLONI B73 CN – year 1994

Bisellatrice – vista e piaciuta  
Bevelling machine – as is

Min. Size plate: 40 x 40 mm  
Thicknesses: 3 – 20 mm  
Working speed: 0 – 4 m / min.  
Angle: 3 – 45 °  
Bevel size: 50 mm  
Power: 17 kW

**OPTIONED**



## MOLATRICI PER ANGOLI / EDGER FOR CORNER

TR

### DF 4

Macchinario per incassi su angoli – vista e piaciuta  
Corner recessings machinery – as is



**QUARANTA – year 2001**

Doppio Nastro manuale – visto e piaciuto  
Double Manual belt – as is

Double belt



W  
TR

**DF**

Nastro manuale – visto e piaciuto  
Manual belt – as is

H 1200 mm



**NASTRO BARETTA**

Nastro manuale – visto e piaciuto  
Single belt – as is

**QUARANTA MN 3350 / A – year 2005**

Nastro manuale – visto e piaciuto  
Single belt – as is

H 3300 mm



BELLUCI

living glass future®

W

TR

**CARSAR**

Nastro manuale – visto e piaciuto  
Single belt – as is

H 2400 mm



TR

**CARSAR**

Nastro manuale – visto e piaciuto  
Single belt – as is

H 2400 mm



TR

**TREVISO**

Nastro manuale – visto e piaciuto  
Single belt – as is

H 1600 mm



TR

**CARSAR**

Nastro manuale – visto e piaciuto  
Single belt – as is

H 2400 mm



BELLUCCHI  
living glass f

TR

**KRISTALL 2000**

Moletta per vetri artistici – vista e piaciuta  
Edger for artistic glass – as is



**MOLATRICI-SAGOMATRICI/ SHAPING EDGERS**

TR

**BAVELLONI SB10 – year 1990**

Sagomatrice – visto e piaciuto  
Shaped machine – as is

Min workable 100 mm  
Max workable 2100 mm  
Thickness 3-40 mm  
Max bevel 40 mm  
Power 3.5 kw



TR

**GIEFFE PROFIL - Year 1993**

Sagomatrice per filo lucido – visto e piaciuto  
Shaped machine – as is

Thickness 4-50 mm  
Min. Glass Diameter 110 mm  
Max. Glass Diameter 2400 mm  
Power 5 Kw



living glass

W

TR

**GIEFFE POLISH – year 1997**

Macchina per filo lucido e lucidatura – visto e piaciuto  
Polishing machine – as is



TR

Tampone per lucidatura – visto e piaciuto  
Polishing pad – as is



\*  
W

**FELTRO DF AERO**

TR

Tampone di sughero per lucidatura – visto e piaciuto  
Cork pad for polishing – as is



**BELLUCCI**

**TAMPONE**

Tampone per lucidatura – visto e piaciuto  
Polishing pad – as is



living glass f

W  
TR

**TAMPONE DF**

Tampone per lucidatura – visto e piaciuto  
Polishing pad – as is



**BAVELLONI K4 – year 1996**

Sagomatrice-bisellatrice – visto e piaciuto  
Shaping beveling machine – as is

Min. Dimensions 260 mm  
Max Dimensions 2600 mm  
Thickness 3 – 20 mm  
Bevel Width 0 – 40 mm  
Power 4 kW



W  
TR

**LATTUADA B45 – year 1998**

Sagomatrice-bisellatrice – visto e piaciuto  
Shaping beveling machine – as is

Maximum dimension of round glass sheets 2.500 mm  
Minimum dimension (processing on the table) . 500 mm.  
Minimum dimension (processing with plateau) 120 mm.  
Maximum bevel width . 40 mm.  
Maximum bevel inclination model B/45 45°



W  
TR

**LATTUADA B 45 – year 1997**

Sagomatrice – visto e piaciuto  
Shaping machine – as is

Max. dim. Of round glass sheets 2.500 mm  
Min. dim. (processing on the table) 500 mm.  
Min. dim. (processing with plateau) 120 mm.  
Max. bevel width . 40 mm.  
Max. bevel inclination model B/45 45°



**GIEFFE BILUX 2 ELECTRONIC – Year 1994**

Sagomatrice bisellatrice – visto e piaciuto  
Shaping beveling machine – as is

Glass Thickness: 3 – 25 mm  
Minimum glass sizes: 100 x 220 mm  
Maximum glass diameter: 2400 mm.  
Bevel length: 5-40 mm  
Bevel angle: 0-15 °



**VITRODODI – year 1996**

Sagomatrice – visto e piaciuto  
Shaping machine – as is

For polished edge



### FORNI DI TEMPERA/ TEMPERING FURNACES

W **MAPPI AU 1F 1S 900 1800 O.4 R.S.A. – year 2001**

AL

Forno di Tempera – visto e piaciuto  
Tempering Furnace – as is

Max. glass dim.: 900X2000 mm  
Thickness: 4-19 mm



**MAPPI AU 1F 1S 1200 3000 O.4.S.**

Forno di Tempera – visto e piaciuto  
Tempering Oven – as is

Working dimensions 1200x3000 mm  
(Can do 1250 mm)  
Thickness 4-19 mm  
Overall dimensions 4300x16500 mm



**EUROTECH WAY  
ROBO CLEAN – year 2026**

Robot per la pulizia e la lucidatura di rulli in silice fusa  
per forni di tempra – visto e piaciuto  
Robot for cleaning and polishing fused silica rollers for  
glass tempering furnaces – as is

Fully automatic 2-hour cleaning cycle  
Use of the same robot on multiple furnaces of different  
widths and types  
Improved tempered glass quality  
No risk of roller wear  
No need to use water



## FORNI DI LAMINAZIONE/ LAMINATING FURNACES

### PUJOL LAM/PRO 2840 – year 2018

Forno di Laminazione – visto e piaciuto  
Laminating Furnace – as is

Max. dim.: 2800x4000 mm



TR

### SAFF STRATIFICA – year 2008

Forno per laminazione e fusione – visto e piaciuto  
Laminating and fusion furnace – as is

Working dimensions 800x1800 mm  
Internal dimensions 2000x1000x400 mm (h)  
External dimensions 2500x2100x1500 mm (h)  
Temp. 850°  
Power 18 kW



### SOLARO MOD. 160 – Year 2016

Forno di Laminazione – visto e piaciuto  
Laminating Furnace – as is

Dim.: 1400 x 3200 mm



## FORNI DI CURVATURA/ BENDING FURNACES

PG

### OLIVASTRI FKRepv – year 2006

Forno per curvatura di vetro temperato – visto e piaciuto  
Bending furnace for tempered glass – as is

Total length of the oven 17 meters  
Useful dimensions of the bending chamber  
1200x1200x600  
Maximum dimensions of the sheets to be bent  
1100x1100x4 mm  
Minimum dimensions of the plates to be bent  
300x300x4 mm



## FORNI DI FUSIONE/ FUSION FURNACES

### TORNATI TLE 200 – Year 1996

Forno per fusione– visto e piaciuto  
Fusion furnace – as is

Working Dimensions 1000 x 2000 mm  
Power 27,4 kW  
Operating Temperature 850°  
Time to Reach Operating Temperature 45-120 m  
Overall Dimensions 2400x1260x520 mm  
Weight 500 Kg



TR

### VEGA INTERNATIONAL

Forno per fusione– visto e piaciuto  
Fusion furnace – as is

Dim.: 1100x900 mm  
Temperatura: 900°C

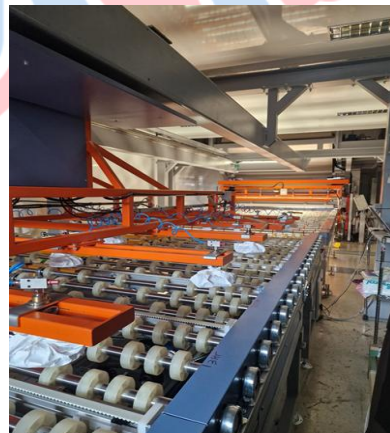


## LINEA PER LAMINAZIONE PVB / LAMINATING PVB LINE

### LISEC PVB LAMINATION LINE

Linea per laminazione del vetro– visto e piaciuto  
Laminating glass line – as is

Composed of:  
TERRUZZI Autoclave – Year 2007  
Washing Machine LISEC HVM26B6 – Year 2015  
White Room  
Mangle  
Dimensions 6000x3000 mm



## CENTRI DI LAVORO VERTICALI/ VERTICAL CNC

### CMV STT 2500 X 3500 – Year 2021

Edging/Arrising Machine

Min. Dimensions 550 x 310 (h) mm  
Max Dimensions 3200 x 2500 (h) mm  
Thickness 3-19 mm  
Power 16 kW  
Working direction: Right to left



TR

**BAVELLONI VT 1250 – year 2004**

Trapano orizzontale – visto e piaciuto  
Horizontal drilling machine – as is

2 Heads  
Laser  
Thickness 3-25 mm (Both drills)  
Max thickness (1 drill) 50 mm  
Min. glass size 100x100 mm  
Hole diameter (2 drills) 4-130 mm  
Max hole diameter (1 drill) 220 mm  
Speed 390-5220 rpm  
Power 3,5 kW



W

TR

**INTERMAC BUSETTI GIO' 1250 – year 2005**

Trapano orizzontale automatico – visto e piaciuto  
Automatic Horizontal drilling machine – as is

2 heads  
Glass thickness : 3-38 mm  
Drilling range along Y-axis 0-1250 mm  
Drilling range along X-axis 0-1450 mm



W

TR

**POLYMEC – year 2008**

Trapano orizzontale – visto e piaciuto  
Horizontal drilling machine – as is

2 heads



TR

**ADA**

Trapano orizzontale – visto e piaciuto  
Horizontal drilling machine – as is

2 heads



W  
TR

### **BARETTA 2T – year 2004**

Trapano orizzontale – visto e piaciuto  
Horizontal drilling machine – as is

2 heads



TR

### **BARETTA PROFILI**

Trapano orizzontale – visto e piaciuto  
Horizontal drilling machine – as is

1 head



W  
TR

### **MAVER TM 1 T SUPER CONDOR 16B – year 2008**

Trapano orizzontale – visto e piaciuto  
Horizontal drilling machine – as is

1 head



W  
TR

### **BOLLA AUDAX 15 –year 1996**

Trapano orizzontale – visto e piaciuto  
Horizontal drilling machine – as is

1 heads



Trapano orizzontale – visto e piaciuto  
Horizontal drilling machine – as is

1 heads



**LISEC WHV 250 – year 1993**

Lavatrice verticale – vista e piaciuta  
Vertical Washing Machine – as is

H 2500 mm  
6 brushes



**MARVAL – Year 2002**

Lavatrice verticale – vista e piaciuta  
Vertical Washing Machine – as is

H 2500 mm  
4 spazzole  
Low-E



**MARVAL ST – Year 2020**

Lavatrice verticale – vista e piaciuta  
Vertical Washing Machine – as is

H1600 mm  
4 Brushes  
Low-E  
Open Top



**SCV SYSTEM – Year 2011**

Lavatrice verticale – vista e piaciuta  
Vertical Washing Machine – as is

H 1600 mm  
4 Brushes



### **B.C.S. Technologies**

Lavatrice verticale – vista e piaciuta  
Vertical Washing Machine – as is

H 2000 mm  
4 Brushes  
Low-E



### **BARETTA**

Lavatrice verticale – vista e piaciuta  
Vertical Washing Machine – as is

## **LAVATRICI ORIZZONTALI HORIZONTAL WASHING MACHINES**

TR

### **ROYAL GLASS – year 2006**

Lavatrice orizzontale – vista e piaciuta  
Horizontal Washing machine – as is

4 Brushes  
Lenght 2000 mm



N

### **BOVONE 130 - year 1990**

Lavatrice orizzontale – vista e piaciuta  
Horizontal Washing machine – as is

4 brushes



living glass

### MALNATI T SERIE

Lavatrice orizzontale – vista e piaciuta  
Horizontal Washing machine – as is

Maximum glass size: 1100 mm  
Minimum washable dimensions (mm) 100 x 100  
Washable thicknesses (mm) 3 – 19  
Manual thickness adjustment  
Work speed (m/min) 1 – 4



### MALNATI

Lavatrice orizzontale – vista e piaciuta  
Horizontal Washing machine – as is



## LINEE VETROCAMERA / INSULATING GLASS LINES

### MARVAL A25T6 DX - Year 2002

Linea di vetrocamera – vista e piaciuta  
Insulating Glass Line – as is

Washing Machine  
Roll Press  
Tilting Table  
H 2500  
4 Brushes  
Max. thickness: 50 mm  
Working Direction Right to Left  
Overall Dimensions 15 m + 4 m (Tilting Table)



### LISEC LINE – year 2001

Linea di vetrocamera – vista e piaciuta  
Insulating Glass Line – as is

H 2500 mm  
– RTVN-15/25 ST (assembly station)  
– VHW-25/6M (Washing Machine)  
– VL-1N/25 (Sealing Robot)

Total lenght 27 m



### **LISEC VFL 1F – Year 2009**

Sigillatrice automatica – vista e piaciuta  
Automatic Sealing Machine – as is

H 2000 mm  
Working Direction Right to Left



TR

### **FOREL PBN 6.32 A4 - Year 2008**

Piegaprofili automatica – vista e piaciuta  
Automatic Profile Bender – as is

Acceptable spacer hollow profiles from 6 to 32 mm.  
Minimum spacer frame dimensions (rectangular reference) 100 mm x 150 mm  
Maximum spacer frame dimensions (rectangular reference) 1600 mm x 2000 mm  
Shapes allowed infinite  
Edge bending from 0° to 155°



TR

### **LISEC A1RL – year 2004**

Caricasali automatica – visto e piaciuto  
Automatic Dessicant loader – as is

Profile width 6 - 24 mm  
Profile height 6 - 8,5 m  
Minimum size 150 x 150 mm



### **SILEMECCANICA**

Caricasali Manuale – visto e piaciuto  
Manual Dessicant loader – as is



**NDS**

Caricasali Manuale – visto e piaciuto  
Manual Dessicant loader – as is



**FOREL T1200 EA8 – year 2009**

Estrusore bicomponente – visto e piaciuto  
Bicomponent Extruder – as is



**GRACO D200**

Estrusore – visto e piaciuto  
Extruder – as is



**GRACO**

Estrusore bicomponente – visto e piaciuto  
Two -component extruder – as is



**GRACO K03C**

Estrusore – visto e piaciuto  
Extruder – as is



**FOREL MB 7501 – year 2013**

Butilatrice – vista e piaciuta  
Butil – as is

Spacer thickness MIN – MAX (mm) 6- 32  
Layer of butyl (kg) 7.5



**MARVAL L 75 B – year 2010**

Butilatrice – vista e piaciuta  
Butil – as is



**FOREL 1025 - year 1999**

Butilatrice – vista e piaciuta  
Butil – as is

KG 2,5



**POLYGLASS BUT 1K – Year 2010**

Butilatrice – vista e piaciuta  
Butil – as is

1 Kg



**BATTELLINO BK 100 LX – Year 2011**

Butilatrice – vista e piaciuta  
Butil – as is

Pneumatic pressure 7atm  
Compressed air required max 10 1t  
Dimensions 2100 x 490 x 1000mm  
Speed 0 -18 Mt/min  
Nozzle opening 6 - 32 mm  
Used butyl 1 kg



W  
TR

**EMAR M101 - Year 2000**

Estrusore hot melt – visto e piaciuto  
Hot melt extruder – as is



W  
TR

**MARVAL L 35/P - Year 1996**

Estrusore hot melt – visto e piaciuto  
Hot melt extruder – as is

35 Liters  
Power : 8,5 kW - 380 V



TR

**MARVAL L 35/P**

Estrusore hot melt – visto e piaciuto  
Hot melt extruder – as is

35 Liters  
Power 8,5 kW - 380 V  
900 x 550 x 1350 (h)  
Weight 260 Kg



T

### NUOVA ARZANO

Miscelatore per silicone – visto e piaciuto  
Silicone mixer – as is



### IDROTECNICA DRO RO 60 – year 2008

Demineralizzatore acqua ad osmosi inversa – visto e piaciuto  
Reverse osmosis water demineralizer – as is



### IDRO RO 130 ST – Year 2016

Demineralizzatore acqua ad osmosi inversa – visto e piaciuto  
Reverse osmosis water demineralizer – as is

portata (flow) 130 l/min.  
Max pressure 14 bar



TR

### SILEMECCANICA

Tavolino girevole – visto e piaciuto  
Turnable table – as is



### **TECNOGLASS TG 90 – year 2015**

Tavolino girevole – visto e piaciuto  
Turnable table – as is

Pneumatic pressure 6 bar  
Maximum opening 1870 x 630 mm  
Extensible rails stainless steel  
Height adjustment Manual  
Rotation 90° – 360°  
Rotation speed Adjustable  
Central suction cup diameter 155 mm  
Side suction cups diameter 85 mm  
Glass handling On supporting spheres  
Control pedalera + remote control



### **MARVAL**

Tavolino girevole – visto e piaciuto  
Turnable table – as is



### **BATTELLINO**

Tavolino girevole – visto e piaciuto  
Turnable table – as is

Glass dimensions  
Max. dimensions 2000x1000 mm  
Min. dimensions 150x150 mm  
Max. weight 80 Kg  
Power supply 220 V 50 Hz  
Installed power 0,2 KW  
Compressed air required Max. 6 bar  
Air consumption 13 lt/min



### **TECNOGLASS TDK 3000 PLUS – year 2014**

Tagliaprofili – vista e piaciuta  
Cutting Frame Machine – as is

Power supply 380 V Triphase 50 Hz  
Pneumatic pressure 6 bar  
Aluminium cutting disk diameter 250 mm  
Steel cutting disk diameter 250 mm  
Cutting range min 70 – max 3100 mm  
Cutting precision 0,1 mm  
Positioning speed 1,5 m/sec



**FOREL 200/A – year 2002**

Tagliaprofili – vista e piaciuta  
Cutting Frame Machine – as is



**BATELLINO MODEL S – Year 2011**

Tagliaprofili – vista e piaciuta  
Cutting Frame Machine – as is

Arms dimension 3000mm  
Blade dimension Ø 216 Z200  
Pneumatic pressure regulator  
Measurement accuracy +/- 0,01 mm  
Compressed air required  
Installed power 1 kW  
Power supply 380V 50Hz



**MARVAL – year 2013**

Freezer – visto e piaciuto

Gas R 404  
Power 2 kW



**FOREL – year 1993**

Freezer – visto e piaciuto



**CARICAGAS FOREL GF4754A4 – year 2008**

Caricagas automatica – vista e piaciuta  
Automatic gas filler – as is

4-channel gas charger



**CARICAGAS FOREL – year 2008**

Caricagas automatica – vista e piaciuta  
Automatic gas filler – as is

4-channel gas charger



N

**FOREL**

Piegaprofilo manuale – vista e piaciuta  
Manual profile bending machine – as is

for circles



**FOREL**

Piegaprofilo manuale – vista e piaciuta  
Manual profile bending machine – as is

for circles



**PEZZA MISTRAL 120 - Year 2000**

CABINA DI SABBIATURA AUTOMATICA/MANUALE A  
CONTROLLO NUMERICO – vista e piaciuta  
AUTOMATIC/MANUAL SAND-BLASTING CABINET WITH  
NUMERICAL CONTROL – as is

Max Dim. 1200 mm  
Min. Dim. 200x200 mm  
Thickness 1-50 mm  
Speed 1 m<sup>2</sup>=4/5 min.  
Air Consumption 800 Lt/min.  
Power 2 kW



**CRS 180 A 32 – Year 2018**

Sabbiatrice automatica – visto e piaciuto  
Automatic sandblasting machine– as is

H 1800 mm  
Overall dimensions: Length 5200 mm (central body 1200  
mm + sides 1880 mm each), Width 13500 mm, Height  
2700 mm.  
2 pistole automatiche  
Open Top



**PEZZA GHIBLI 60 - year 2000**

Sabbiatrice manuale – visto e piaciuto  
Sandblasting machine manual – as is

Power : 0,8 kw



**SOLARO – year 2007**

Sabbiatrice manuale – visto e piaciuto  
Sandblasting machine - manual – as is

H 1300 mm



W

TR

### BARETTA – year 1999

Sabbiatrice manuale – visto e piaciuto  
Sandblasting machine - manual – as is

H 1400 mm



## SABBIATRICI MANUALI ORIZZONTALI / HORIZONTAL SANDBLASTING MACHINES

W

TR

### PEZZA SAHARA 1000 SPECIAL – year 1997

Sabbiatrice orizzontale – visto e piaciuto  
Sandblasting machine – Horizontal – as is

Max Glass Size 1000 mm  
Min. Glass Size 200x200 mm  
Speed 0,5 mq/min.  
Sand Blasting Guns n. 4  
Power 5 kW



TR

### OFFICINE BELLUCCI AVS 27 – year 2024

Sabbiatrice portatile – visto e piaciuto  
Portable Sandblaster – as is

Voltage 230/240 V 50/60 Hz  
Power Nom./Max 1100/1350 W  
Air flow 54 l/sec. Mq/Min. 3,24  
Water lift 220 mBar  
Effective capacity 27 l  
Noise level 70 dB



W

TR

### SABBIA PER SABBIATRICE

#### CORIDONE 120



**MOVETRO – Year 2013**

Classificatore automatico con navetta – visto e piaciuto  
Automatic Storage Rack with shuttle – as is

32 Positions  
Loader  
Mushrooms for 3-position stand parking



**CLASSIFICATORE MANUALE**

Classificatore Manuale – visto e piaciuto  
Manual Storage Rack – as is

10 pos.



Carelli portavetro – visto e piaciuto  
Racks for glass – as is



**DELLA PICCOLA**

Carelli portavetro – visto e piaciuto  
Racks for glass – as is



**GAR-SAVE**

Carello per casse di vetro – visto e piaciuto  
 Rack for box of glass – as is



**PINZE- VENTOSE / CLAMP - VACUUM**

**OMIS**

Gru a bandiera - vista e piaciuta  
 Jib crane – as is

Capacity' 250 Kg

**OMIS OPE 308 4T 7N - Year 2009**

Carroponte  
 Electric Overhead Crane

Double-girder structure with profiled beam  
 Capacity 3,2 t  
 Gauge 11,56 m  
 Hook stroke 6 m

**RBB – Year 2002**

Scaricatore – visto e piaciuto  
 Unloader – as is

**SINGLE LIFT VA-500 – year 2026**

Ventosa 6 patte– vista e piaciuta  
 Vacuum 6 patte – as is

Box Dimension 1535x625x475 mm 35kg ± 2  
 Number Of Pads 2+4  
 Machine Weight 80kg ± 2  
 Electric System 12 V 14Ah  
 Pad Diameter 290 mm  
 Max. Workload 500kg  
 Manual Tilting Angle 0°/90°  
 Manual Turning Angle 360°



**PANNKOKKE 7000-A – year 1996**

Ventosa 4 patte– vista e piaciuta  
Vacuum 4 patte – as is

Capacity: 600 kg  
suction cup type 388



TR

**BESANA 8U – year 1996**

Ventosa 8 patte– vista e piaciuta  
Vacuum 8 patte – as is

Capacity 1200 Kg



**RBB 12 P.G.M.**

Ventosa 12 patte– vista e piaciuta  
Vacuum 12 patte – as is

Capacity 1080 Kg  
12 Fastening Points  
Min. Plate Dimensions 1100x1400 mm  
Weight 170 Kg  
Powered Rotation and Tilt  
Weight 170 Kg



**RBB 12 P.F. – year 2002**

Ventosa 12 patte– vista e piaciuta  
Vacuum 12 patte – as is

Fixed Suction Cup Unit  
Capacity 1080 Kg  
12 Fastening Points  
Min. Plate Dimensions 3300x1600 mm  
Weight 177 Kg



**RBB 4 P.GM.BM. – Year 2003**

Ventosa 4 patte– vista e piaciuta  
Vacuum 4 patte – as is

Powered Rotation and Tilt  
Capacity 360 Kg  
4 Fastening Points  
Min. Plate Dimensions 600x800 mm  
Weight 104 Kg



TR

**ATA GPR2RR - Year 1993**

Ventosa girevole 2 patte- vista e piaciuta  
Rotating suction cup unit 2 patte – as is

Load capacity 250 kg



Carrello trasporto lastre di vetro – visto e piaciuto  
Glass sheet transport trolley – as is



TR

**WEHA MAMMUT – NEW**

Ventosa manuale – vista e piaciuta  
Manual vacuum – as is

Dim: 500x255x250 mm  
Suction plate diameter: 200 mm  
Wight: 5,5 kg



**M & G – Year 2006**

Pinza portavetro – vista e piaciuta  
Clamp – as is



TR

**ELEPHANT**

Pinza portavetro – vista e piaciuta  
Clamp – as is

Capacity: 250 KG



## PINZA



TR

### **BOTTERO F – Year 2010**

Pinza portavetro – vista e piaciuta  
Clamp – as is

Thickness 32-42 mm  
Capacity 1000 Kg



TR

### **BOTTERO D – Year 2007**

Pinza portavetro – vista e piaciuta  
Clamp – as is

Thickness 10-22 mm  
Capacity 1000 Kg



TR

### **MAVER – year 2006**

Pinza portavetro – vista e piaciuta  
Clamp – as is

Capacity 1000 Kg



TR

### **BOTTERO C-750/32 – Year 2002**

Pinza portavetro – vista e piaciuta  
Clamp – as is

Thickness 4-16 mm  
Capacity 800 Kg



TR

### **BOTTERO F/750 – year 2000**

Pinza portavetro – vista e piaciuta  
Clamp – as is

Thickness: 15-30 mm  
Capacity: 1.000 kg



N

**BOTTERO – Year 1999**

Pinza portavetro – vista e piaciuta  
Clamp – as is

Capacity': 750 kg



TR

**BOTTERO C/750 – year 1995**

Pinza portavetro – vista e piaciuta  
Clamp – as is

Capacity': 800 kg

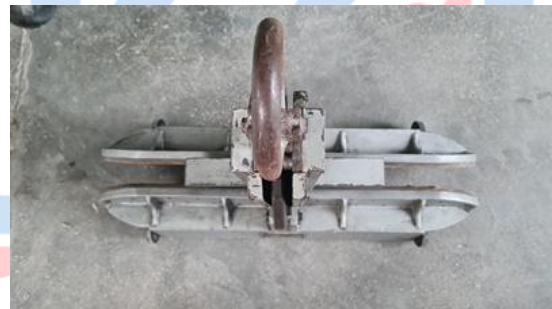


TR

**BOTTERO F/750 EXPORT – year 1980**

Pinza portavetro – vista e piaciuta  
Clamp – as is

Capacity': 1.000 kg



TR

**OTTERO C/750 EXPORT – year 1976**

Pinza portavetro – vista e piaciuta  
Clamp – as is

Capacity': 1.000 kg



TR

**OTTERO C/750 EXPORT – year 1976**

Pinza portavetro – vista e piaciuta  
Clamp – as is

Capacity': 1.000 kg



W  
TR

**BESANA – year 1997**

Pinza portavetro – vista e piaciuta  
Clamp – as is

Capacity': 600 kg



W  
TR

**BOLLA**

Ventosa manuale – vista e piaciuta  
Manula vacuum – as is



W  
TR

**VENTOSA**

Ventosa manuale – vista e piaciuta  
Triple suction cups – as is



VARIE / VARIOUS

**CARRELLO PORTA SCARTI DI VETRO**

Visto e piaciuto/ as is

living glass f



**FIAC NEW SILVER 7,5 – year 2016**

Compressore rotativo a vite Con depuratore del aria  
Shamal – visto e piaciuto  
Rotary screw compressor With Shamal air purifier – as is



**SHAMAL SILENTE ZT751 SD - year 2004**

Compressore a pistoni – visto e piaciuto  
Piston Compressor – as is

Power 4 kW 5,5 Hp  
Pressure 10 Bar  
Tank 3 Lt.



TR

**ATLAS COPCO GA 7 P - year 1998**

Compressore – visto e piaciuto  
Compressor – as is

With dryer  
Power 7.5 kW  
Pressure 10 Bar  
Free air delivery: 15.5 l/s



**FIAC - Year 2020**

Compressore – visto e piaciuto  
Compressor – as is

500 l  
Max Press 20 bar  
Air consumption 830 l/min.  
Power 5,5/7,5 kW/Hp  
Weight 255 Kg



TR **FINI E.C BK19-270-5,5 TP 40050 EU R- Year 2001**

Compressore a cinghia – visto e piaciuto  
Belt compressor – as is

Tank 270 l  
Power 5.5 Hp kW 4  
Air intake 460 l/min. Pressure 10 bar



W

TR

### **PLOTTER SUMMA**

Vinyl cutter - visto e piaciuto  
Vinyl cutter – as is



W

TR

### **PLOTTER SUMMA D620**

Vinyl cutter - visto e piaciuto  
Vinyl cutter – as is

Computer control  
Max. cut: 600x50mm  
Thickness: 0,002 mm – 0,030 mm



### **BIDONE ASPIRALIQUIDI**



BELLU  
living glass

T

### **RIELLO GP 405 – year 1997**

Generatore d'aria calda pensile a gas – visto e piaciuto  
Gas-fired hot air generator - as is

Launch distance : 26m  
Helical fan : 1,300 rev./min.  
Voltage : 230 V, 50 Hz, 240 W



TR

**BOHLE**

Compasso per tagliare cerchi e ovali  
Compass for cutting circles and ovals – as is



W

TR

**DF – year 2003**

Granigliatrice – vista e piaciuta  
Shotblasting machine – as is

3 Drawers



W

TR

**APB IP66**

Inverter for modulate the tension



W

TR

**PROXXON**

Seghetto per blindati – visto e piaciuto  
Blindovis cutting saw – as is



W

TR

**BOLLA – year 1997**

Macchina per tacche – visto e piaciuto  
Notches machine – as is



BELLUCI  
living glass

**MACCHINE PORTATILI / PORTABLE MACHINES**

TR

**REGGIATRICE  
STRAPPING MACHINE**



TR

**MAKITA**  
Seghetto portatile – visto e piaciuto  
Portable saw – as is



TR

**TESTER FOR INSULATING GLASS**

**MARTINI EC – 59**  
Pocketsize  
EC/TDS/°C/°F meter

**GRACE PHONOSORB DELTA T TEST  
PESOLA KIT**  
Max. 30 gr



TR

**MEZZI AZIENDALI/ COMPANY EQUIPMENT**

**CAMION IVECO 75 E 15 EUROCARGO – year 2002**

PATENTE C  
Km 189000  
Lunghezza cassone : 4.50 m

**FASSI GRU IDRAULICHE F40A.24**

Lunghezza del braccio: 9,15 m  
Portata max.: 945 kg



TR

**PIAGGIO PORTER – year 2016**

Furgone - visto e piaciuto

1300 cc  
Benzina  
Km 113500 KM



**FIAT IVECO 35C9A – year 2004**

Autocarro per trasporto di cose – visto e piaciuto

Gasolio



**ALFA ROMEO STELVIO 2.2 Q4 190 CV – year 2020**

Autovettura – vista e piaciuta

Gasolio



**JUNGHEINRICH EFG 320 – year 2005**

Muletto per il trasporto delle cose – visto e piaciuto

Forklift – as is



**MACCHINARI PER LAVORAZIONE DEL FERRO/ IRON PROCESSING MACHINERY**

**SERRMAC**

Trapano orizzontale – visto e piaciuto  
Horizontal drilling machine – as is

For iron



**VALEX MG 16 - Year 1989**

Trapano a colonna – visto e piaciuto  
Column drill - as is

Max hole diameter: 16 mm  
Drill vices: 2



TR

**DITTA CROTTI E FIGLIO**

Bascula pesa ferro – visto e piaciuto  
Iron weighing scale – as is



**ATLAS COPCO B4-32 + DDH 32- RP**

Trapano rotante per forature di grande diametro – visto  
e piaciuto  
Heavy duty rotary drill for large diameter drilling – as is

**DDH 32- RP** : 230 v, 50 hz, 110w, 1,6 A  
**B4-32**: 220-230 V, 50-60 HZ, 5,3 A, 1050 W  
Diametro: 32 mm



T

**BOSCH**

Trapano Manuale – visto e piaciuto  
Manual Driller - as is

V 220  
A 22  
W 420

RPM 720/min.



**HILTI DCM 1.5**

Carotatrice con punta diamantata – vista e piaciuta  
Diamond Core Machine Drill – as is



**VERDINI Fast S56H**

Martello demolitore – visto e piaciuto  
Demolition Hammer – as is



**MILWAUKEE 18 POWER PLUS**

Trapano avvitatore – visto e piaciuto  
Drill driver – as is



BELLUCCI

living glass future®